

COMPSCI 111 / 111G

*Mastering Cyberspace:
An introduction to practical computing*

CSS

Some additional selectors

Pseudo-selectors

- Application of style depends on the viewer of the web page
- Interactive

```
selector:pseudoselector { property: value; }
```

Mouse position

:active

- Applied when the user clicks the mouse on an element

```
h1:active
{
    background-color: red;
}
```

:hover

- Applied when the mouse is positioned over an element

```
h1:hover
{
    background-color: red;
}
```

Hypertext references

:link

- Applied when a link has not been visited yet
- Always used with the `a` selector

```
a:link
{
    background-color: red;
}
```

:visited

- Applied when a link has been visited
- Always used with the `a` selector

```
a:visited
{
    background-color: red;
}
```

Font

`font-family`

`font-size`

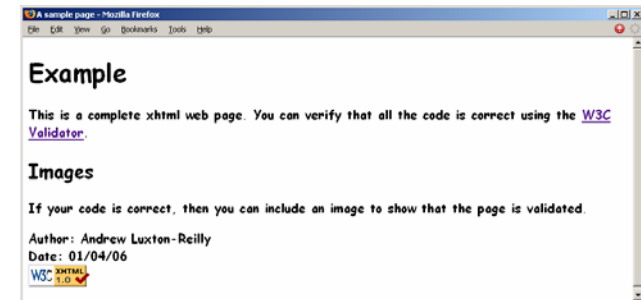
`font-style`

`font-variant`

`font-weight`

Font example

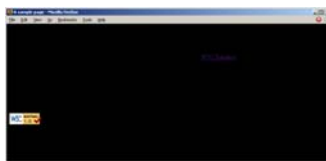
```
body
{
    font-family: "Comic Sans MS", cursive;
    font-size: large;
    font-style: normal;
    font-variant: normal;
    font-weight: bold;
}
```



Background

`background-color`

```
body
{
    background-color: black;
}
```



Text

`color`

`text-align`

`text-indent`

`text-transform`

Text example

```
body
{
    color: blue;
    text-align: justify;
    text-indent: 1cm;
    text-transform: lowercase;
}
```



Borders

`border-color`

`border-style`

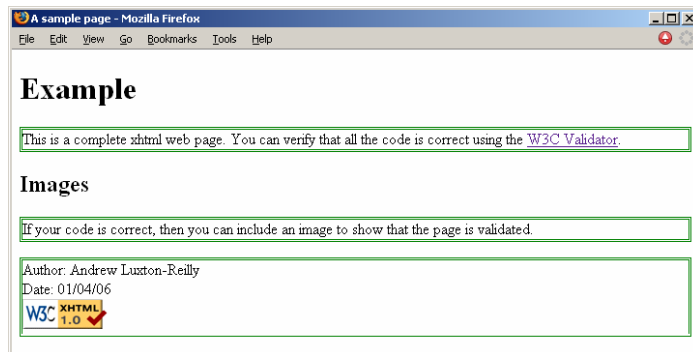
`border-width`

Lengths

Use a variety of units

- cm
- mm
- pt
- px

```
p
{
    border-color: green;
    border-style: double;
    border-width: medium;
}
```



Colours

Sixteen names

- aqua
- black
- blue
- fuchsia
- ...

RGB value

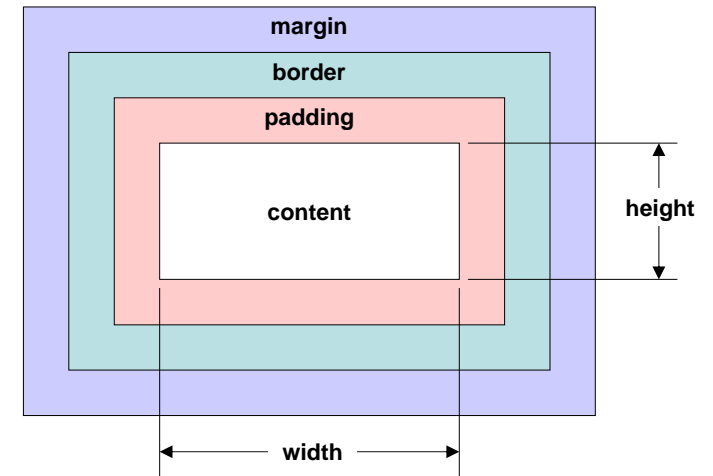
- `rgb(xx, xx, xx)`

Hex value

- `#RRGGBB`

Layout using CSS

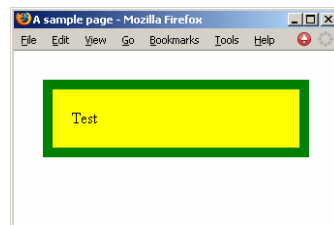
Box model



Box model Example

```
<style>
body{
padding:0px;
margin:0px;
}
#outerbox
{
background-color: green;
padding: 10px;
margin: 30px;
}
#innerbox
{
background-color: yellow;
padding: 20px;
}
</style>
```

```
<div id="outerbox">
<div id="innerbox">
Test
</div>
</div>
```



Positioning

position: static;

- Normal

position: relative;

- Top, left, bottom and right act as offsets from enclosing element

position: absolute;

- Top, left, bottom and right with respect to top-left corner of the page

position: fixed;

- Top, left, bottom and right with respect to browser window